

Z1 No-tear Tagger Applicator: Instructions of Use

Compatible with:



For Cattle

Instructional Videos on YouTube 



Z Tag Large



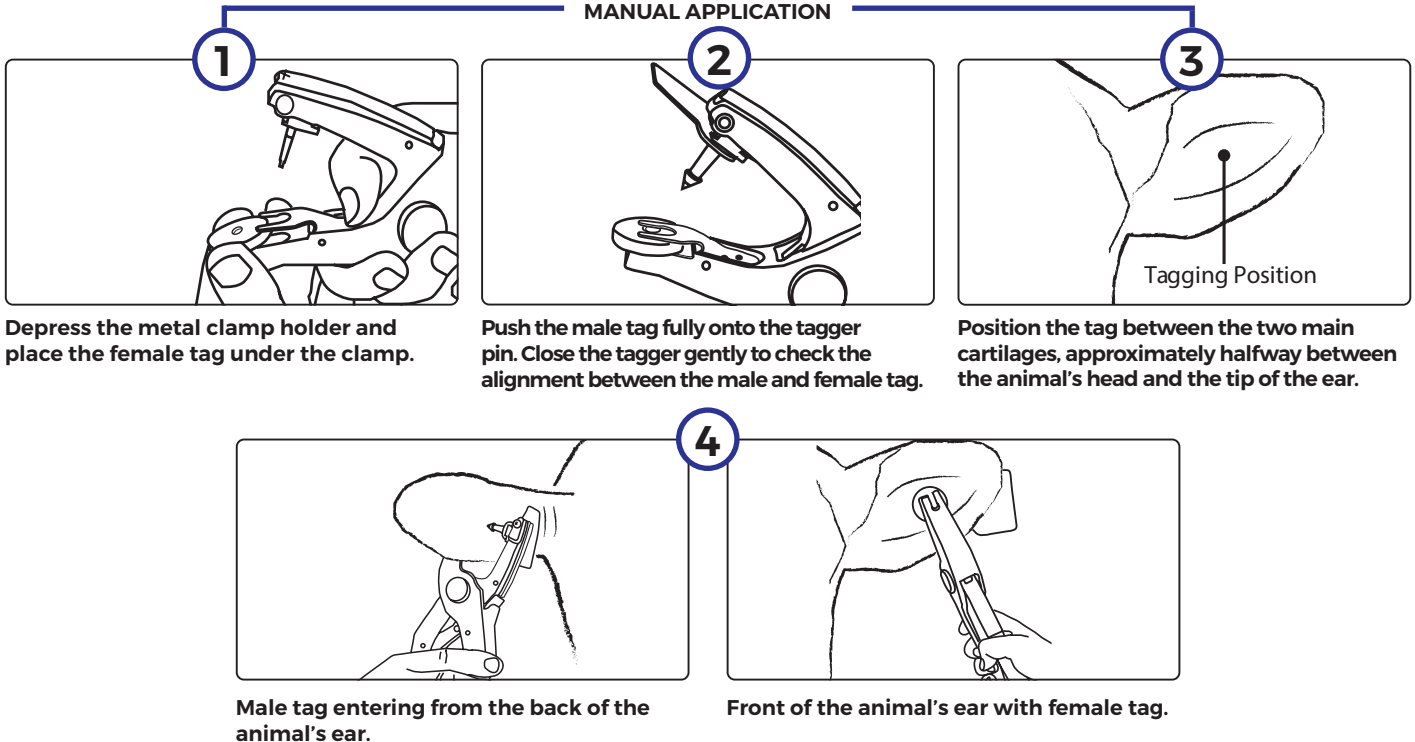
Z Tag Medium



Z Tag Button



MANUAL APPLICATION



ALWAYS APPLY THE MALE TAG THROUGH THE BACK OF THE EAR.

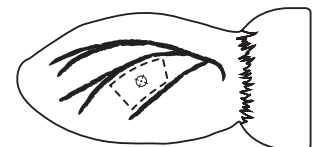
Squeeze handles firmly and hold closed. When the tags have locked together, the tagger arm flicks back and releases the tag preventing ripped ears.

To remove the tagger, pull straight down from animal's ear in one smooth motion - no need to open the handles.

We manufacture tags to the highest standards however successful identification is also achieved by paying particular attention to where and how the tag is applied.

The following information contains general advice and industry guidance on applying tags.

- Make sure that you or your operator is properly trained and competent in the application of ear tags. Read the Health and Safety Executive's advice on the handling and housing of cattle (Agriculture Information Sheet 35).
- Make sure that you are using the correct applicator for the model of tag you are fitting. Always follow the manufacturer's instructions.
- Fit in cool weather (where possible) to minimise infections.
- Secure the animal's head to prevent jerking during tagging.
- Apply tags under hygienic conditions. The operator's hands, the ear, the tag and the applicator should be clean. Disinfect as necessary using an appropriate solution.
- When fitting plastic tags make sure the tags line up correctly on the applicator and will lock together when correctly fitted.
- In the case of plastic tags ensure that both parts of the tag have the same number.
- In the case of plastic tags the female part of the tag should always be on the inside of the ear, this will reduce the chance of the tag snagging or catching on obstructions such as fences, gates and feeding troughs. The male part of the tag should always enter from the back of the ear.
- Check the ear after about 10 days for signs of damage or infection. Consult your veterinary surgeon as necessary.
- Store unused tags in a clean dry container



Feedback forms and advice on best tagging practice can be obtained from:
DEFRA - https://assets.publishing.service.gov.uk/government/uploads/system/uploads/attachment_data/file/928208/ear-tag-report-form-v7.pdf
DAERA - <https://www.daera-ni.gov.uk/publications/ear-tag-performance-form>